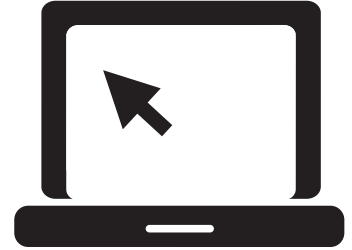


# Olathe Public Schools Online Registration 2017

## *Beginning on July 10 parents should:*

- Begin online registration by visiting your **ParentVue** account at [parentvue.olatheschools.com](http://parentvue.olatheschools.com).
- Online registration will include:
  - Updating enrollment and demographics information
  - Updating health information
  - Completing the Acknowledgements Section
  - Going to **MyPaymentsPlus** link to pay fees. If you need to pay by check or cash, you can make a payment in person at each school.
  - Complete free/reduced lunch application and waiver (if needed). If you need a paper copy, they will be available at each building.
- Please note: all families new to the district will need to stop by their child's school on July 27 from 11 a.m. to 7 p.m. to register. Families who need assistance with online registration can also stop by their child's school for help on July 27 from 11 a.m. to 7 p.m.
- Middle and high schools will be open on July 27 from 11 a.m. to 7 p.m. for registration assistance. At our **middle schools**, students can pick up their schedules, check out their lockers and purchase spirit wear. At our **high schools**, students can pick up their yearbooks, get a parking pass and purchase some spirit wear. Specific activities offered on registration day at middle and high school may vary per building and will be communicated by the principal.
- Our **elementary schools** will ONLY be open on July 27 from 11 a.m. to 7 p.m. to register new families and assist with online registration for those in need of help. More information on **Sneak-a-Peek** nights will come directly from elementary buildings.



***Have a question about online registration?  
Call the district's Registration Hotline at  
913-780-7781 (available starting July 10)***

